

How to install OfficeTime v1 on Mint linux 19.3

Author: another Bill Dawson

March 1, 2020

Tested: OfficeTime v1

Linux Mint v19.3 x64

PlayOnLinux v4.2.12

Wine v5.x.x (You could try earlier versions – BE CAREFUL! – see warning below)

fonts-wine (package installed via apt or Synaptic - optional)

DISCLAIMER:

While I have personally had no problems arising from the process(es) outlined below, I **cannot** guarantee the same results for you. I assume no responsibility for any negative impact these instructions may cause. This guide outlines only my own experience and information I have collected online that works for me.

Proceed entirely at your own risk.

Ok, fear-factor successfully installed. Now uninstalling... I'd like to say that the basic PlayOnLinux process (given here with screenshots) is simple enough that even new linux users should have no trouble following along and achieving the desired result. My darling guinea-pig (um, darling wife) is as non-tech-savvy as they come, and she said she'd have no problem following this guide and doing what needs to be done. :)

Wine is Wine and PlayOnLinux is PlayOnLinux, so in theory, this same (or similar) process should work on many linux distros (hopefully I'm not flaunting any ignorance by saying that!).

WARNING: If you have installed the latest version of Wine via apt (rather than Synaptic, due to lack of sufficient versions), reverting to or installing earlier versions **via the PlayOnLinux interface** will very likely destroy what you accomplish here. In that event, you must **COMPLETELY REMOVE** all packages related to Wine and PlayOnLinux, and begin again.

If you are using Mint linux, you'll discover that the repos only offer Wine versions up to 3.x (at the time of this writing). I had zero success with that, but I required v5 for other things anyway, so I went with the latest. Instructions for how to update to the latest version via apt can be found at the end of this guide.

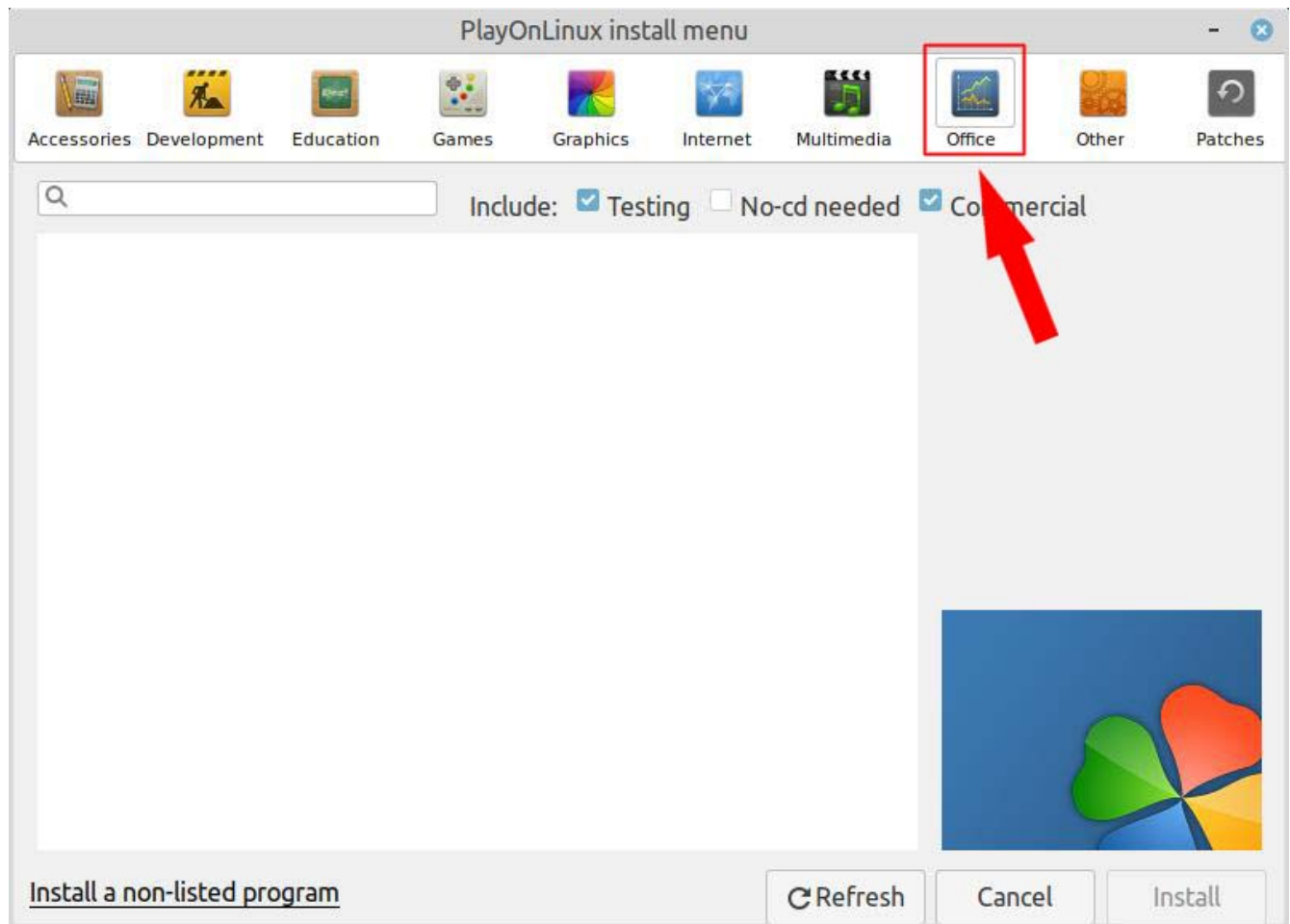
So, if you haven't already, install PlayOnLinux & Wine from your repositories.

Wine v5 is the only version that (eventually) worked for me, but you could try earlier versions if you like. I advise nothing earlier than v4.

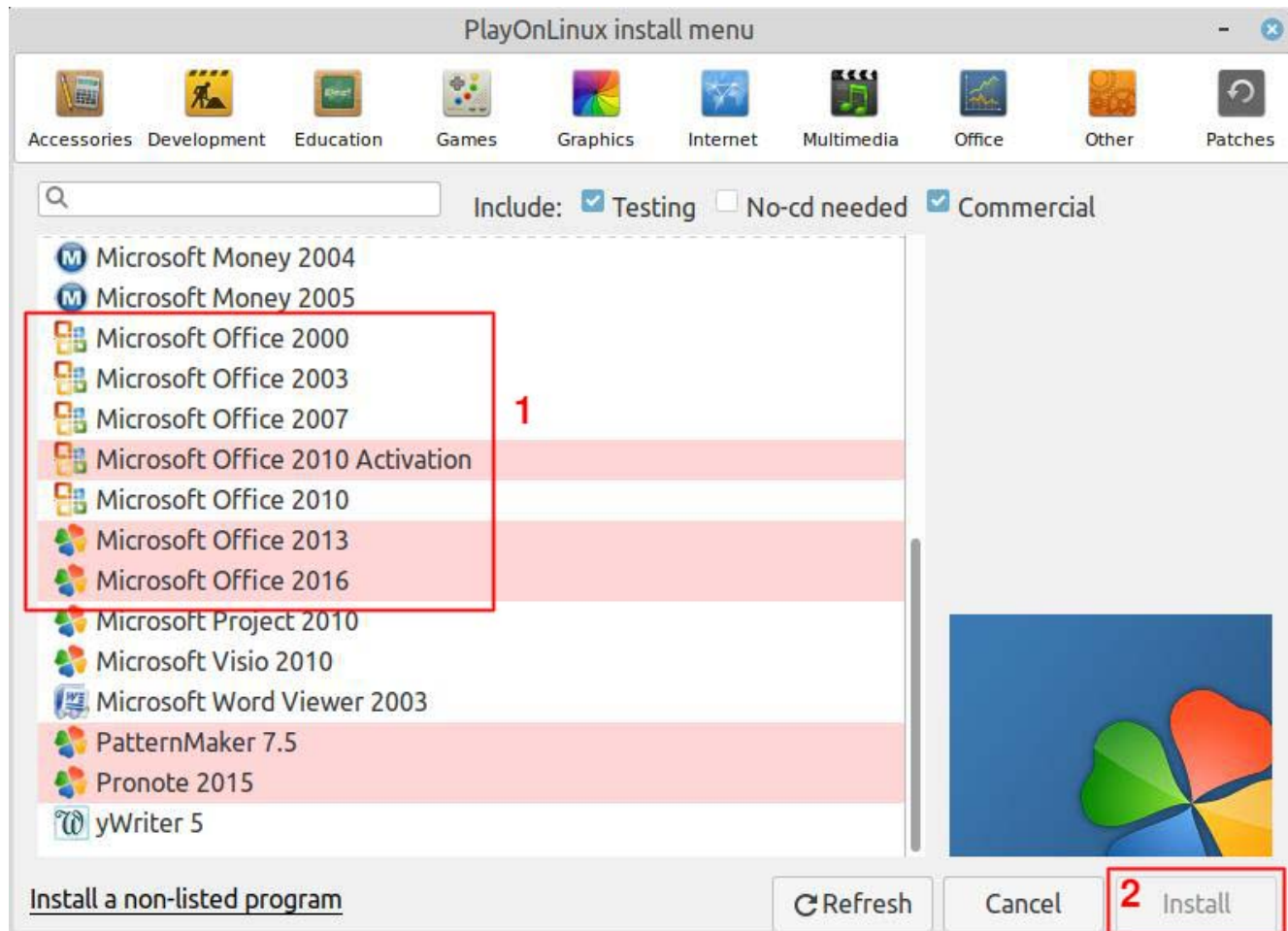
If you plan on using OfficeTime's **Microsoft Outlook** functions, you will need to install Microsoft Office into the same location as OfficeTime. (ie: the same PlayOnLinux virtual drive)
At the time of this writing, PlayOnLinux supports Office versions up to 2016 inclusive.

HOWTO:

- start PlayOnLinux
- click "Install"
- near the top-left corner of the *next window*, click the "Office" button:



- scroll down and select the Office version you are installing



- when asked, install into the same PlayOnLinux virtual drive where you have installed OfficeTime
- follow the prompts

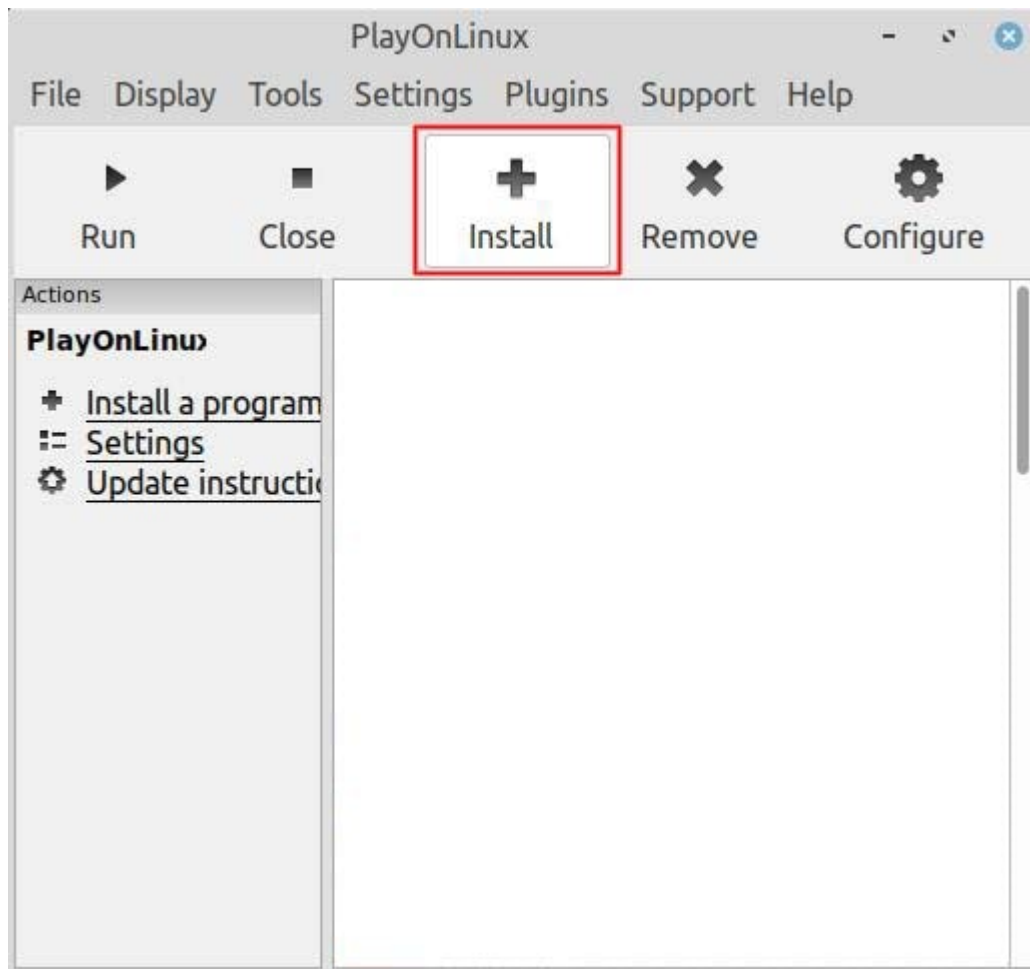
OK, let's get OfficeTime installed!

Open Synaptic => click the "Search" button => enter "wine" (no quotes).
Scroll down to the "W's" and see what version of wine (if any) is installed.
If v4 or higher is available (look for something like "wine-installer", but check the version number).
If the version number is acceptable, then install that along with PlayOnLinux.

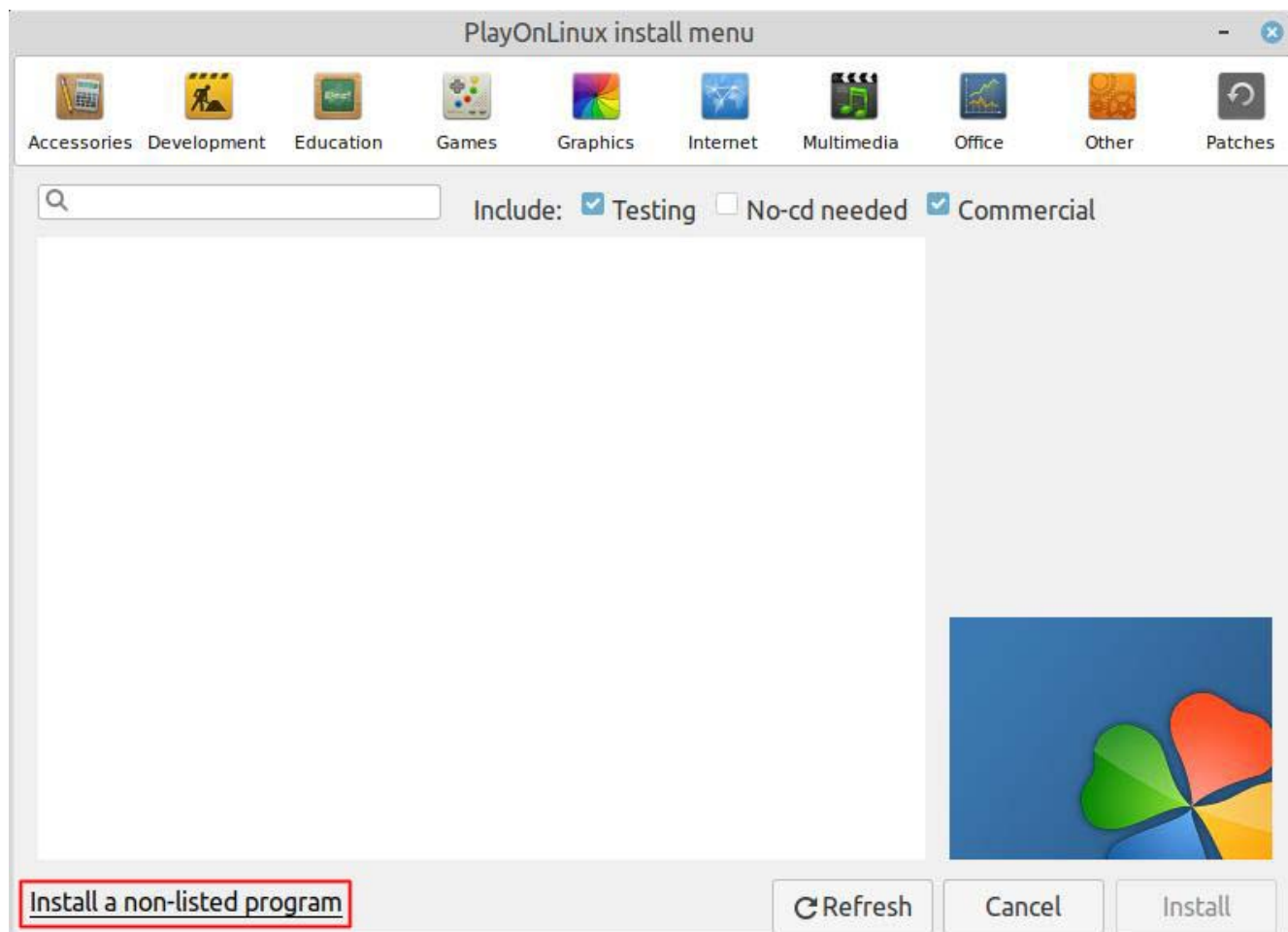
If Wine is not at least version 4, and v4 is not available to install, skip to the end of this guide and follow the instructions under the heading **How to install wine-latest using apt.**

Start PlayOnLinux

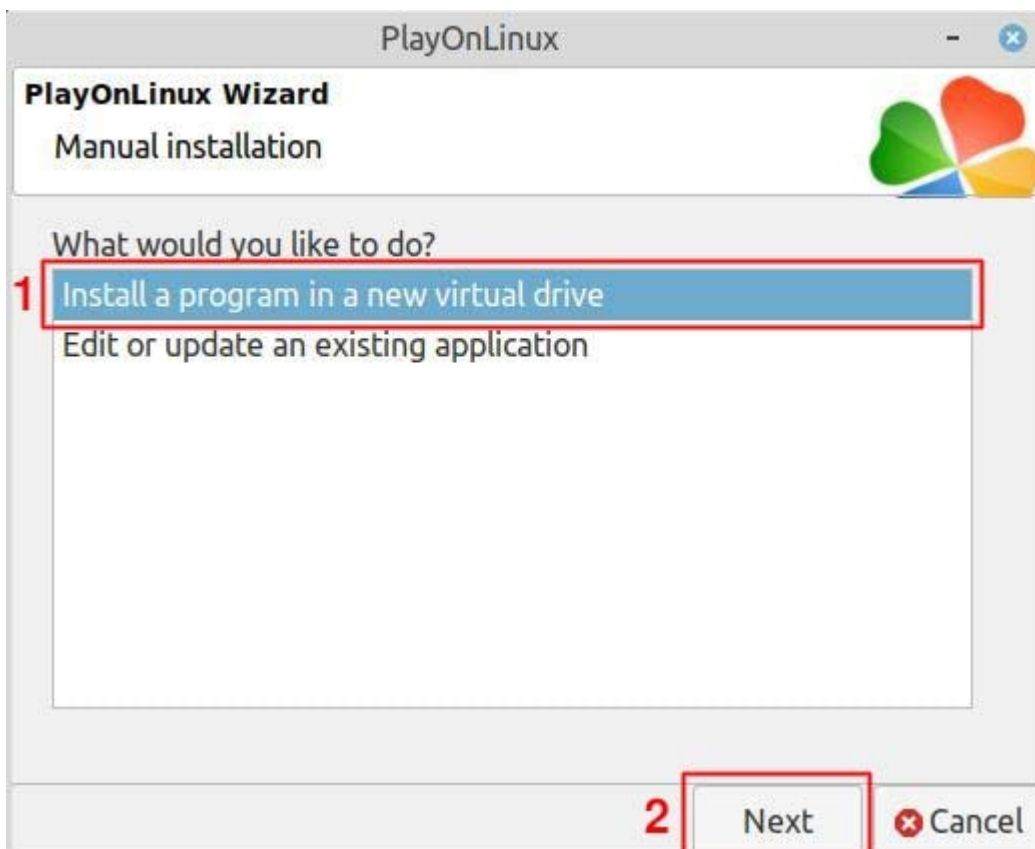
Click "Install"

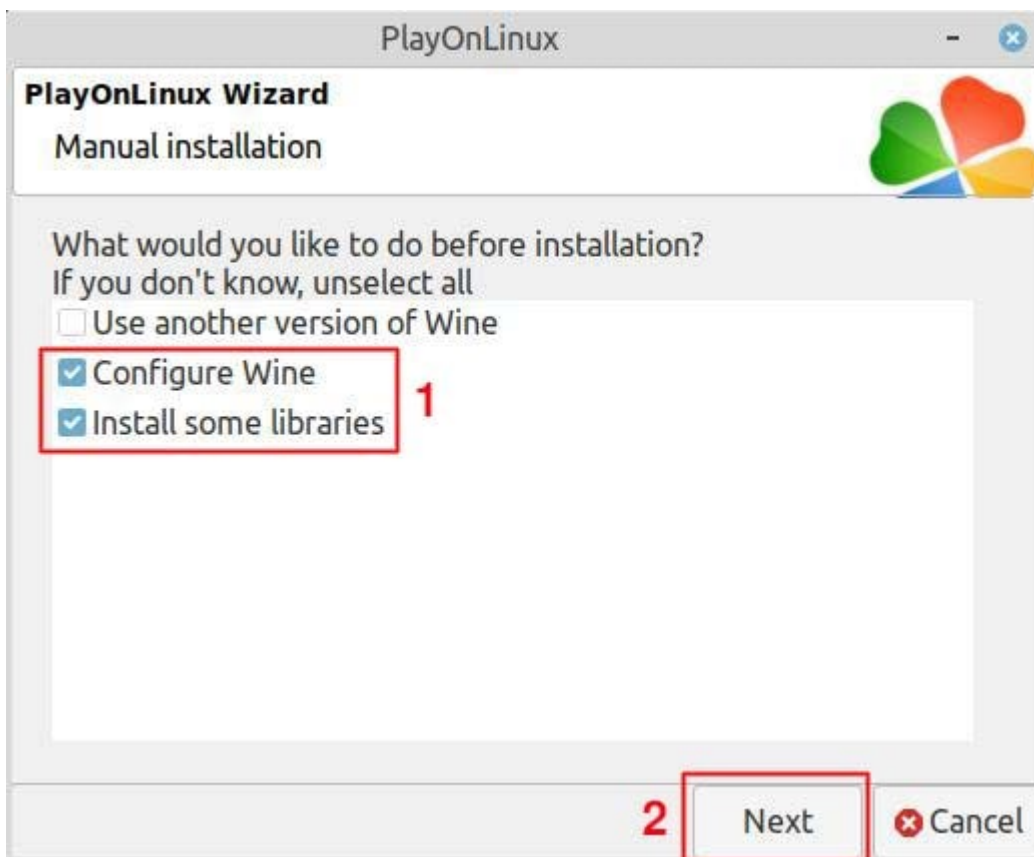
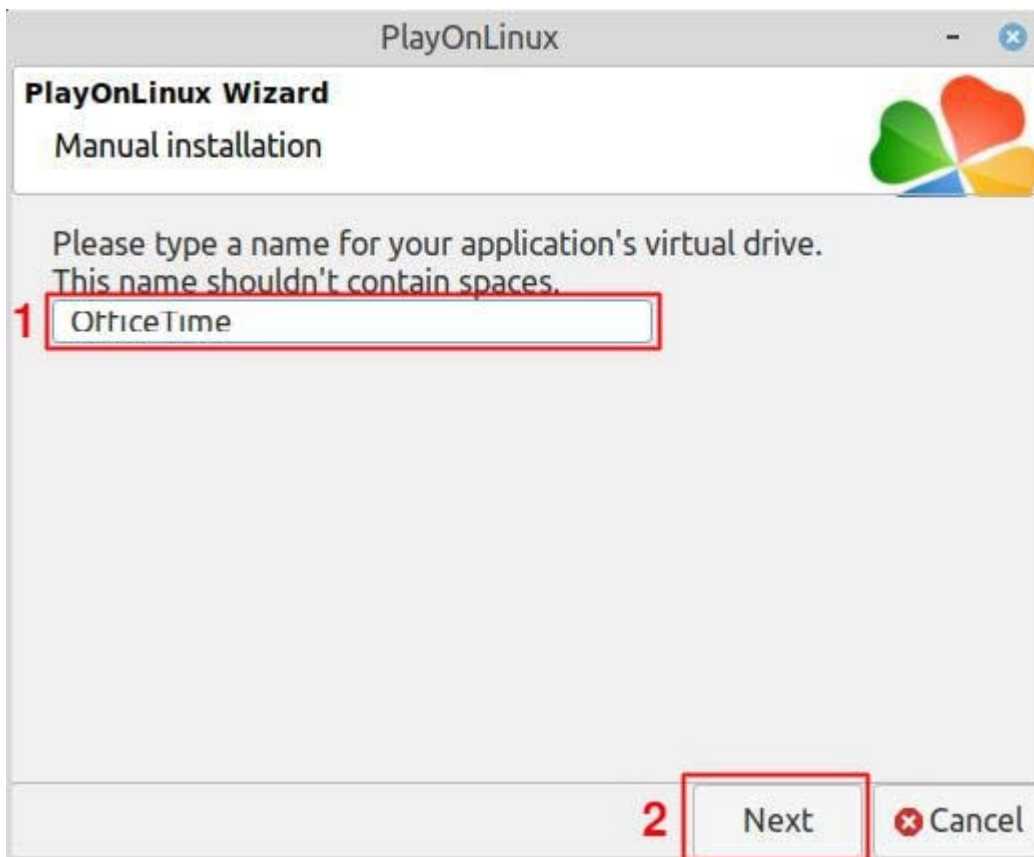


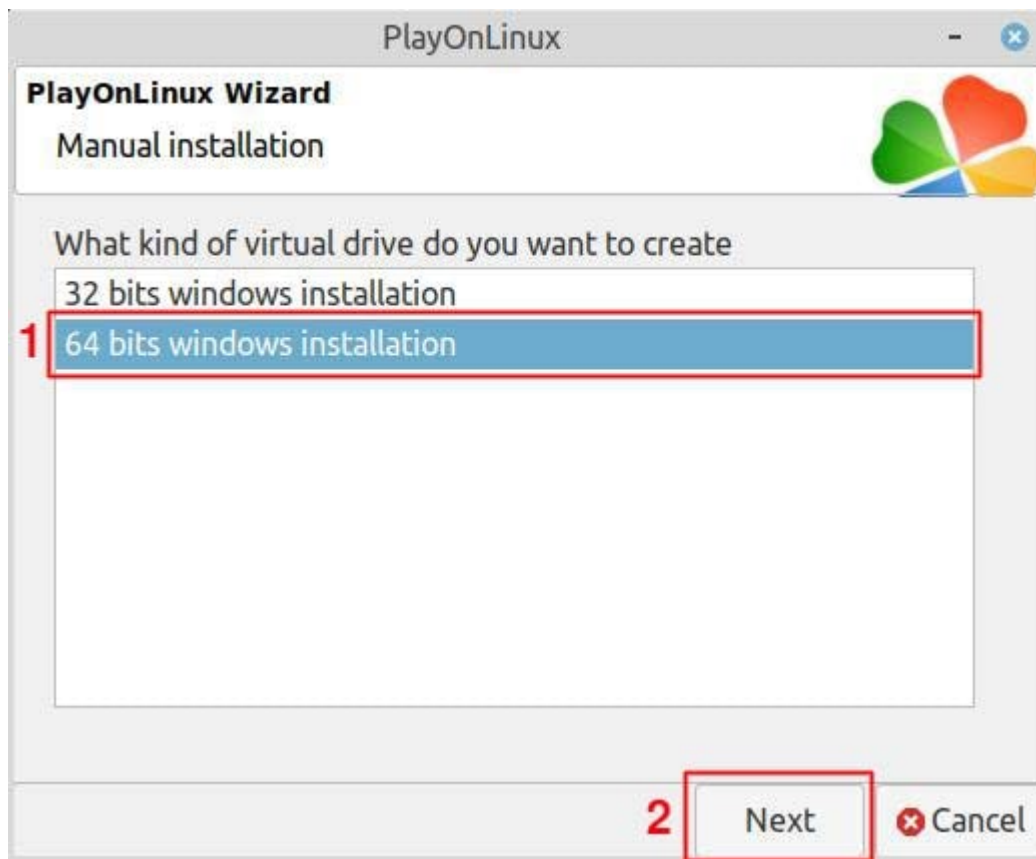
Click "Install a non-listed program"



Time to play click-by-number. ;)

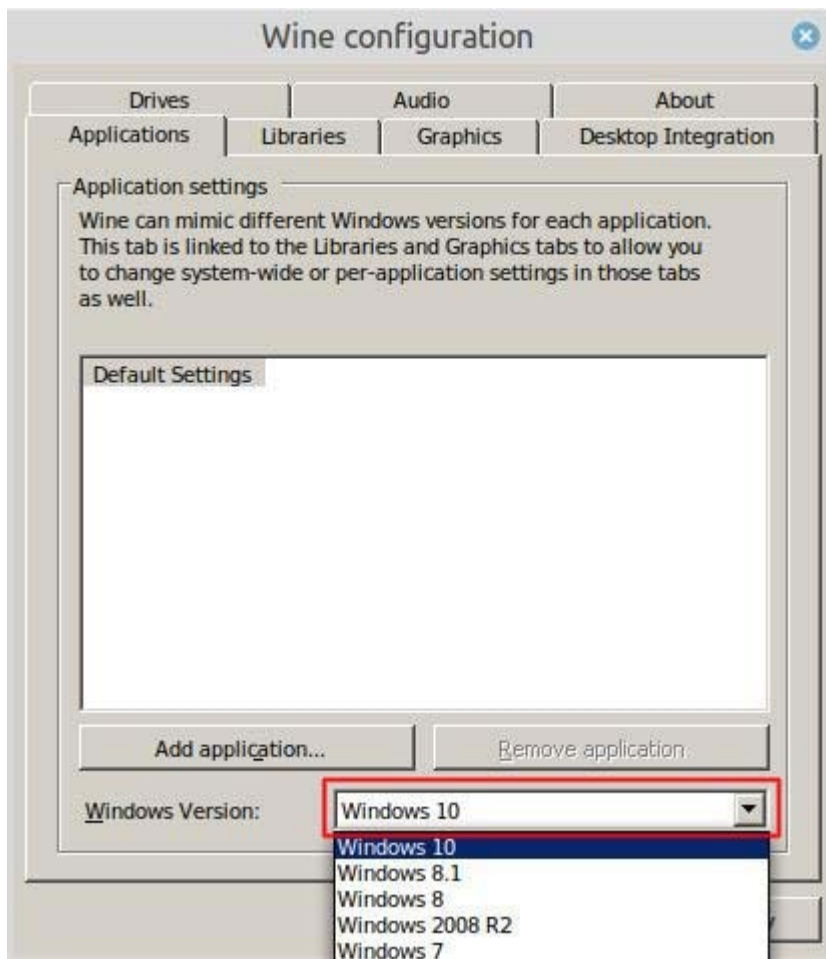




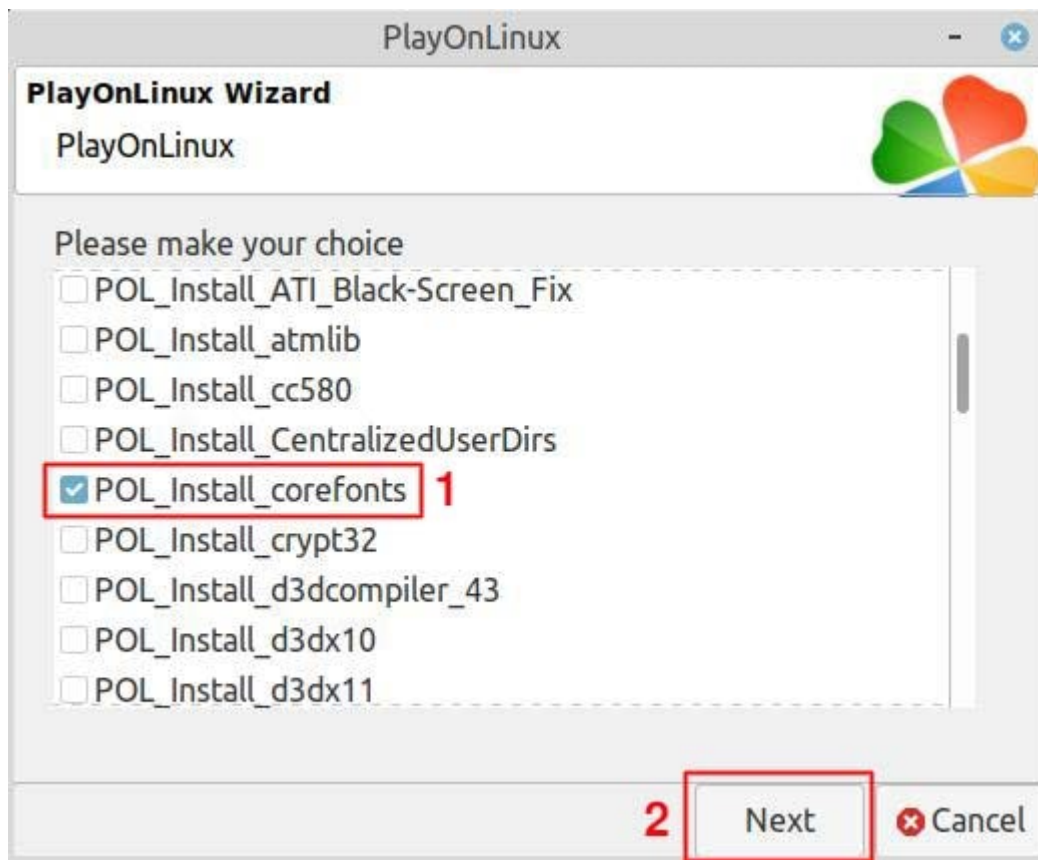


NOTE: OfficeTime will also install and run equally well in a 32 bits installation, it just seems logical to me to use 64 since Windows 10 is 64 bit and we'll be using a Windows 10 setting (does it make any difference?...I honestly don't know).

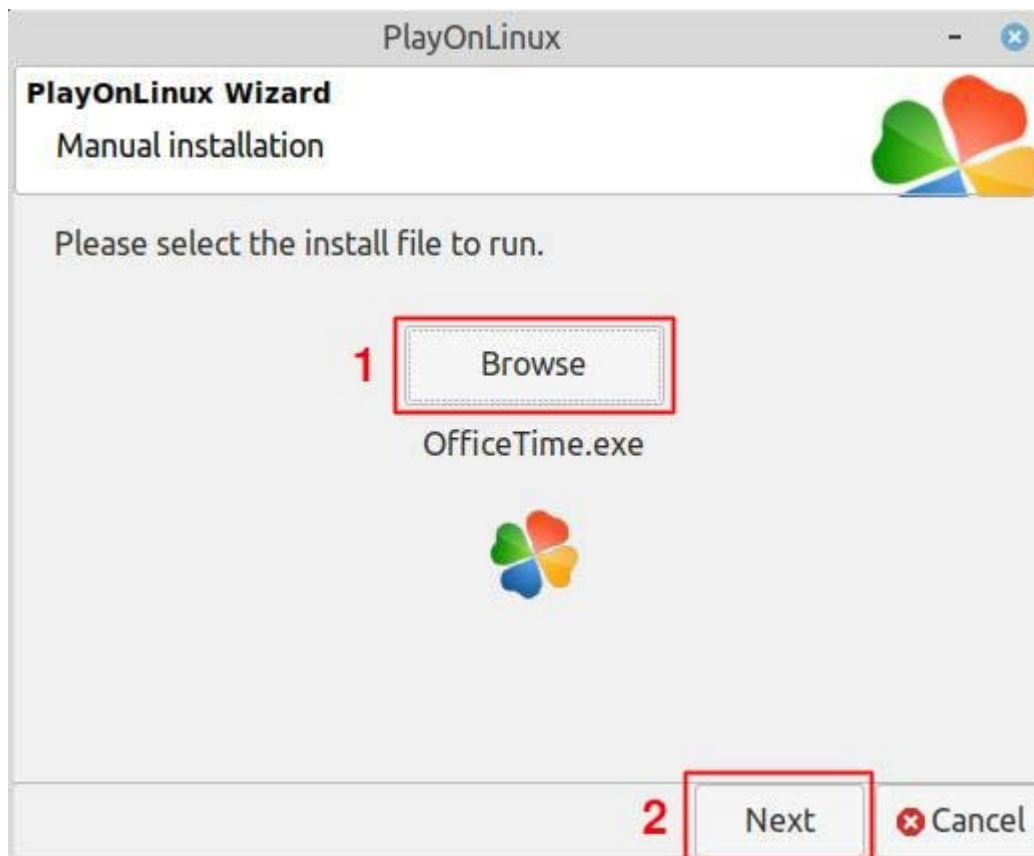
Change the drop-down menu from the default Windows 7 to Windows 10.



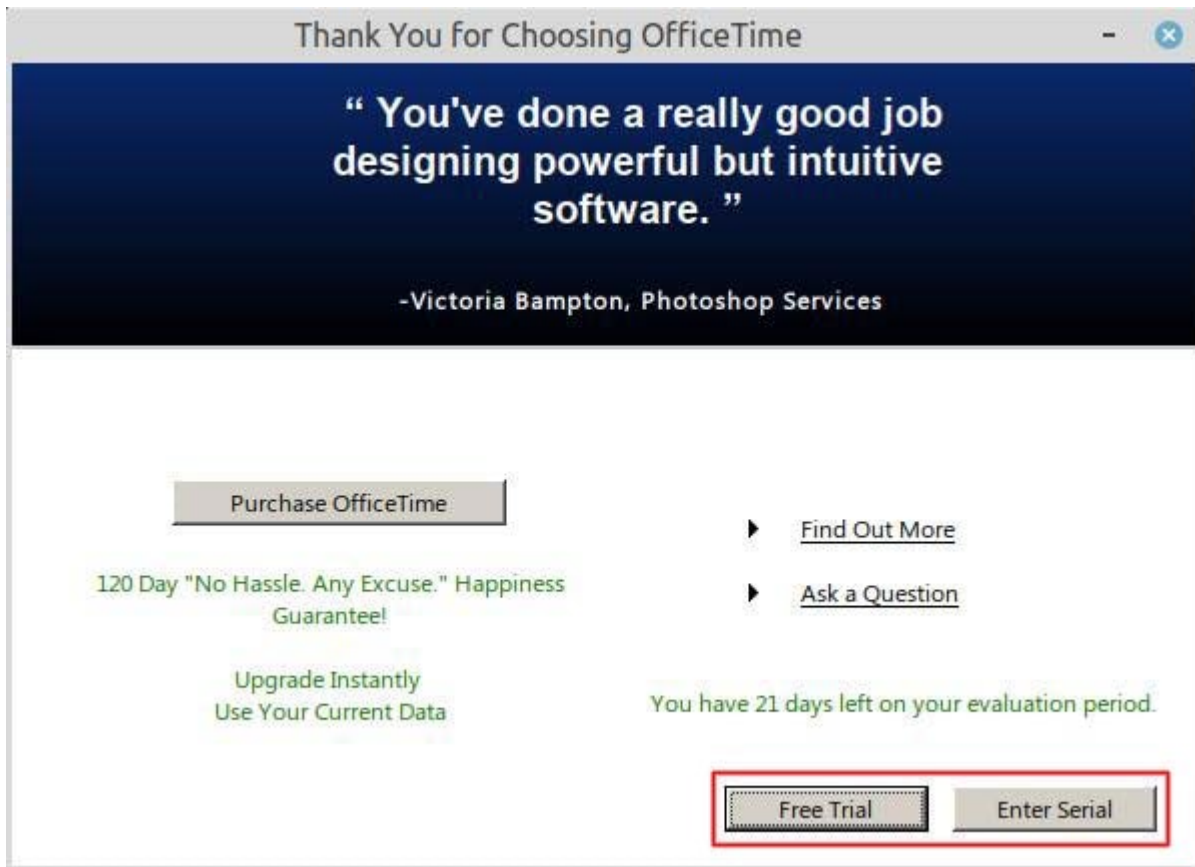
Install Microsoft Core Fonts.



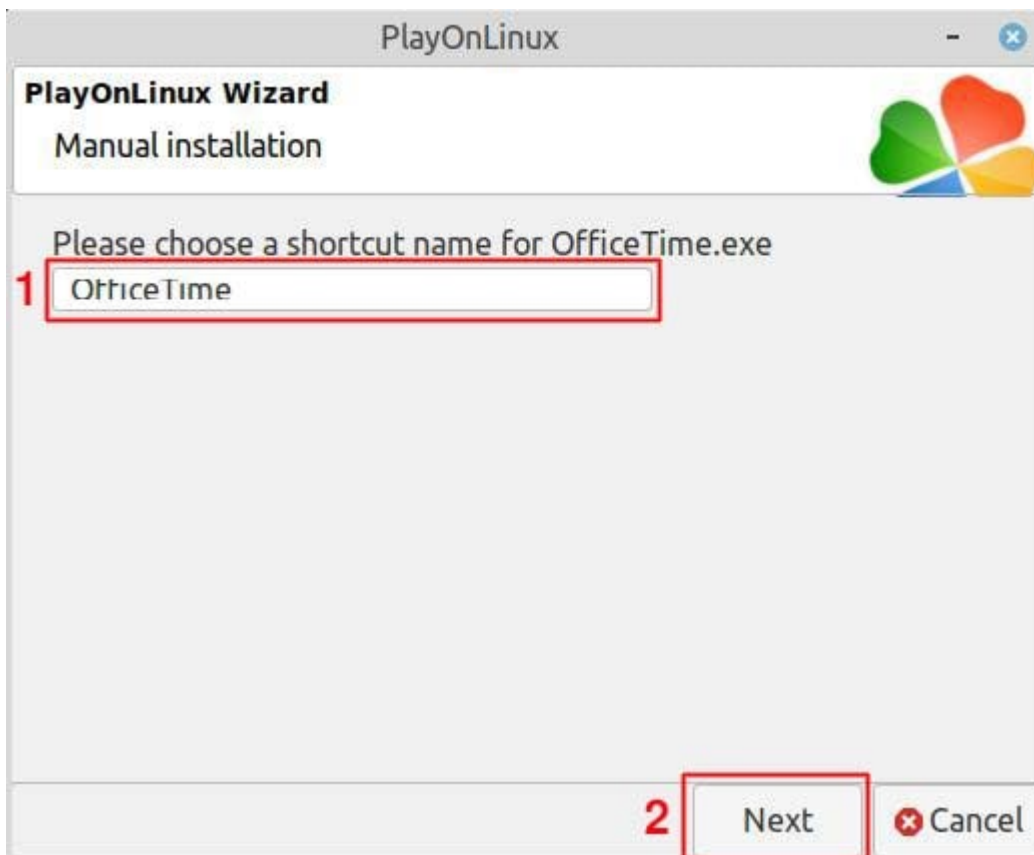
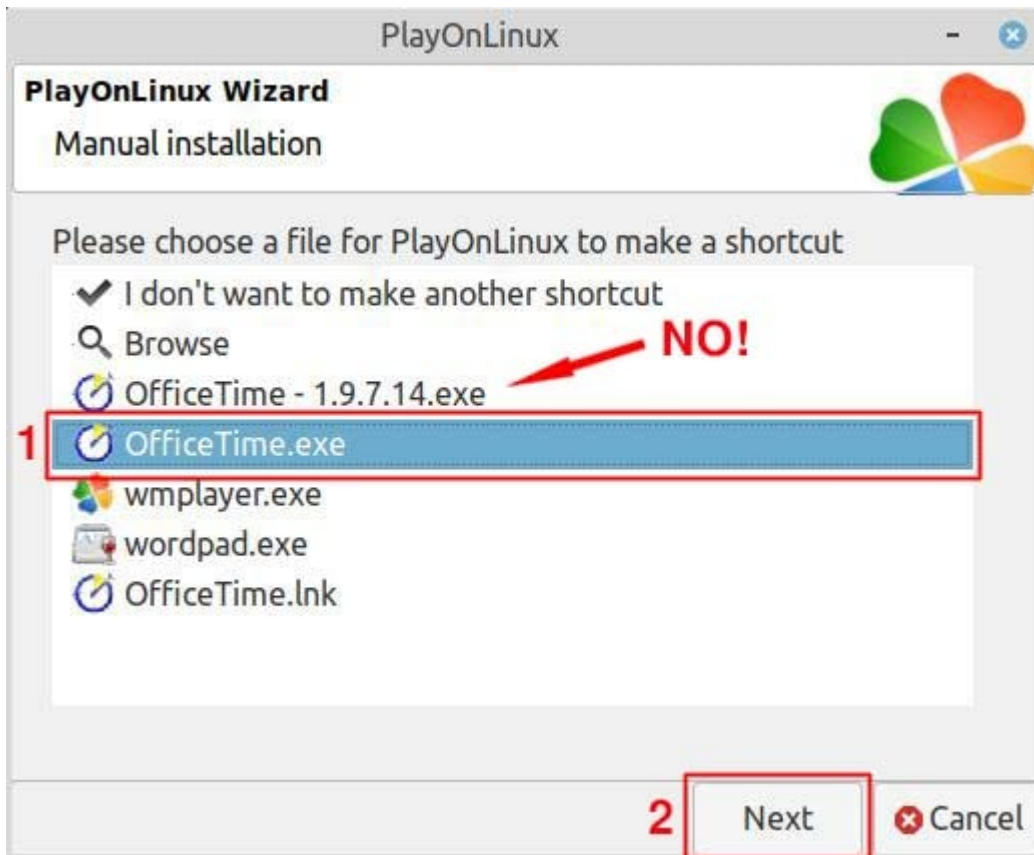
Browse to & select your "OfficeTime.exe" installer file.



Once OfficeTime installation is complete and it starts up, **CLOSE IT** at your first opportunity. This is to allow PlayOnLinux & Wine to complete their own processes without interference. The next step is creating a desktop shortcut (that window will open automatically).



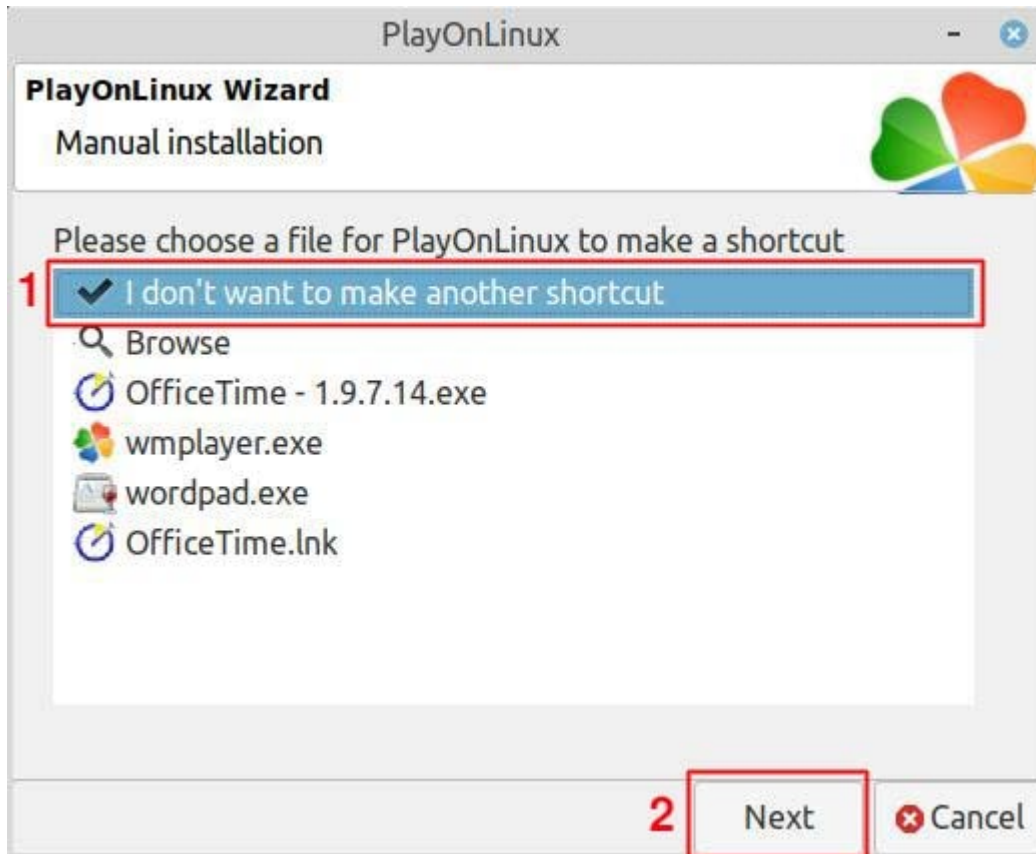
PlayOnLinux will now create a desktop shortcut for you.



After creating an OfficeTime desktop shortcut, PlayOnLinux will return to the window below. You can make shortcuts to Microsoft Office programs here too.

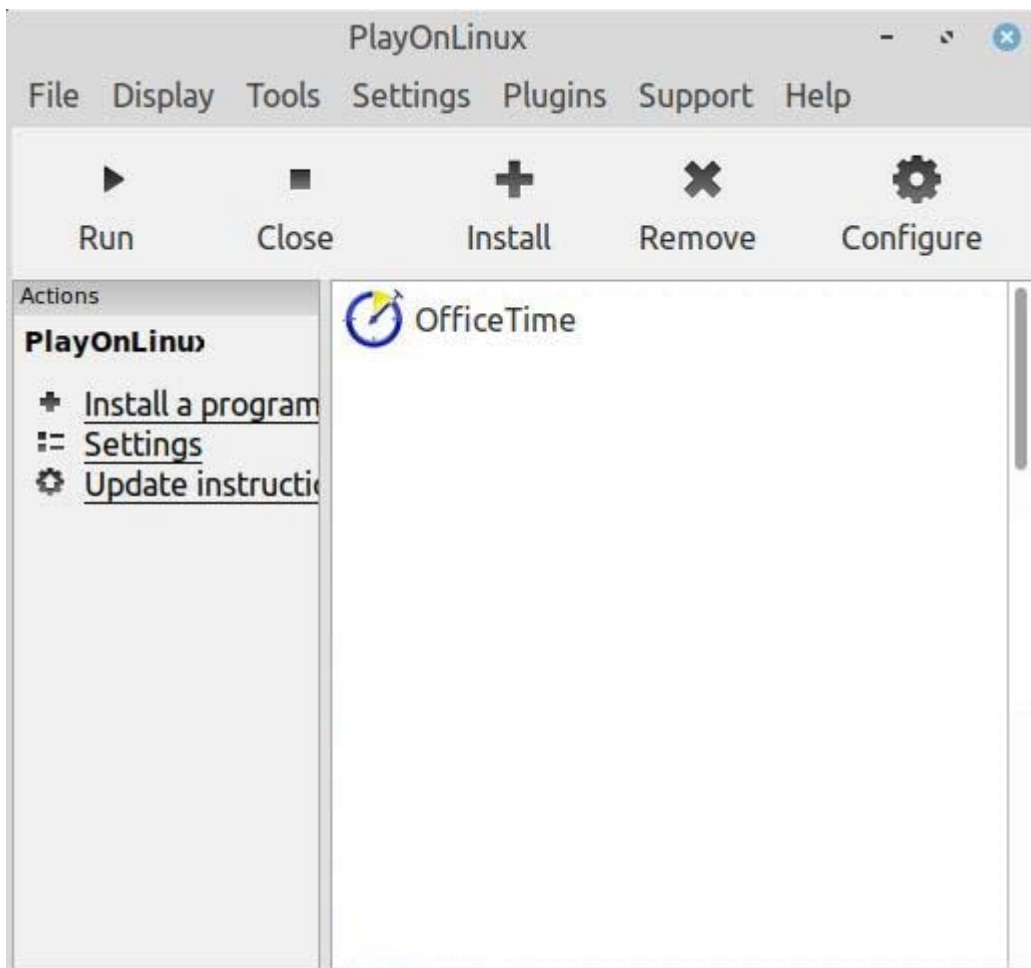
If they don't show up for selection, then either:

- you have installed MS Office into a different PlayOnLinux virtual drive than OfficeTime.
- you haven't installed MS Office yet. (you can come back here later and make new shortcuts)

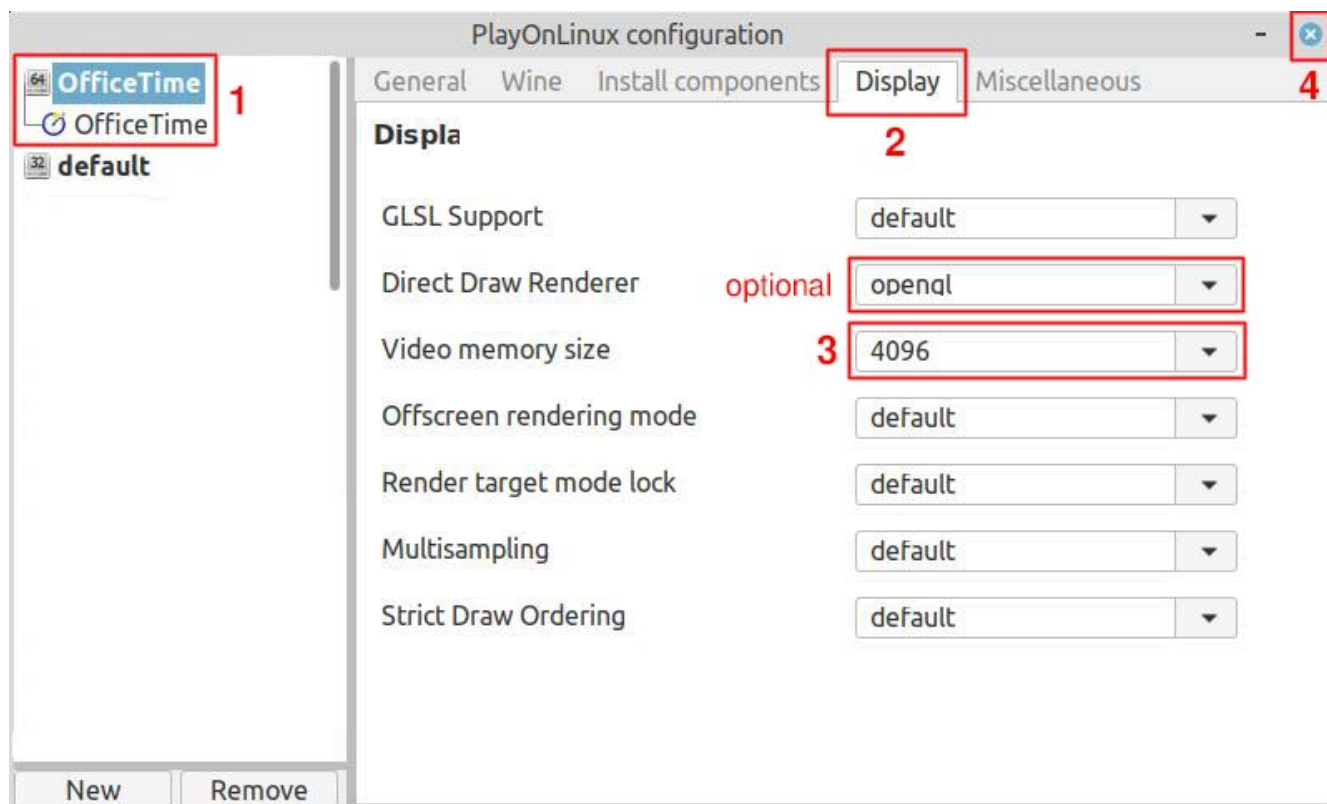


When you're done, select "I don't want to make another shortcut".

And here you are back where you started, but with a shiny new friend.



Finally, let's tell PlayOnLinux how much video memory your device has.
(If you don't know, leave #3 set as "default".)
Click the "Configure" button (see previous screenshot)



If all has gone according to plan, then you now have an OfficeTime desktop shortcut as well as an entry in the main PlayOnLinux window. Congratulations, you did it!

...And there was much rejoicing!

NOTE:

If the refresh in OfficeTime windows is a bit laggy when you manually drag-resize them, it's just a Wine/graphics/redraw thing, and this seems to be fairly common. It shouldn't affect your use of OfficeTime.

To minimize this effect, it may help to set OfficeTime to use your native video device.

In PlayOnLinux:

- Configure (see image above)
- Select OfficeTime (left pane)
- Install Components (tab) => VideoDriver

Select your primary video device (if given a choice).

How to install wine-latest using apt:

!!! If your graphics device is Nvidia, MAKE SURE "SECURE-BOOT" IS DISABLED IN YOUR BIOS.

!!! IF "SECURE-BOOT" IS ACTIVE, you will not have access to your NVidia graphics with proprietary drivers. In fact, it's likely you aren't using those at all.

!!! If you have earlier version(s) of Wine installed (ie: v3), use Synaptic or apt to **COMPLETELY REMOVE Wine & PlayOnLinux**. The process below **WILL FAIL** if you do not.

Open a terminal, and run the following commands in sequence:

```
wget -nc https://dl.winehq.org/wine-builds/winehq.key
```

```
sudo apt-key add winehq.key
```

For Ubuntu 18.04 or Linux Mint 19.x ****ONLY****
(You'll have to adapt this command for your distro otherwise) :

```
sudo apt-add-repository 'deb https://dl.winehq.org/wine-builds/ubuntu/ bionic main'
```

```
sudo apt update && sudo apt install --install-recommends winehq-stable
```

Use Synaptic to install:

PlayOnLinux
fonts-wine (may not be needed, wouldn't hurt to have it)

Return to the beginning of this guide and proceed as instructed.

If OfficeTime still isn't working, try installing one or more of the following:

NOTE: These additions are useful for **gaming**, and are **included here only as a last-resort**. It's best to install them one at a time and check how OfficeTime and/or MS Office is running after each one. You never can tell what might break an installation.

msxml3

(via PlayOnLinux "Install Components". **MUST** be added **BEFORE** installing .NET)

.NET 4.7.x

(use 3rd party installer, via PlayOnLinux "Misc" => "Run a .exe in this virtual drive")

NOTE: You can try installing .NET 4.7.x via PlayOnLinux "Install Components", but I've found it to be hit-and-miss.

mfc42

(via PlayOnLinux "Install Components")

VideoDriver

(set to Nvidia or whatever your primary video device is)

DirectX 2010 (DirectX 9c ?)

(use 3rd party installer, via PlayOnLinux "Misc" => "Run a .exe in this virtual drive")

NOTE: You can install DirectX 9 (and later) via PlayOnLinux "Install Components". As mentioned above, these additions are meant for gaming and may not even be required. If you do install DirectX 9 via PlayOnLinux, choose "d3dx9" from the "Install Components" menu.